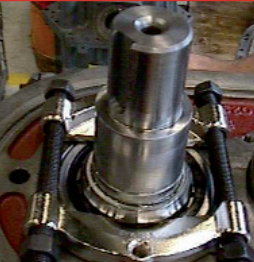
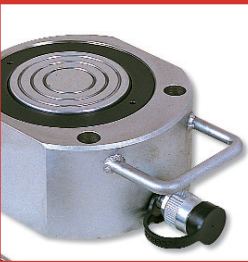
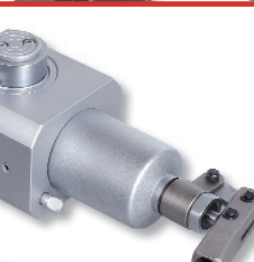
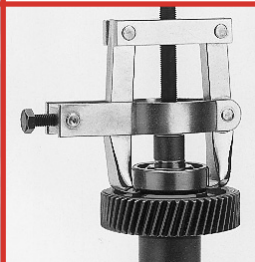
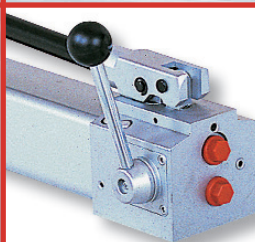


BEGA

SPECIAL TOOLS

ANNO 1978



TOP
QUALITY
SINCE
1978

DISMOUNTING & HYDRAULIC TOOLS

WWW.BEGA.NL



Professional solutions for reliable rotation in maintenance and production

Dear reader,

We're delighted to be able to present to you our Dismounting & Hydraulics catalogue. It contains our BETEX® Dismounting & Hydraulics programme for maintenance (MRO) and production (OEM).

About Bega

We develop, produce and supply tools for monitoring, assembling, dismantling and lubricating transmission parts. In particular for bearings, the heart of all rotating equipment.

BETEX® is a registered trademark of Bega International bv and stands for quality and reliability.

We also supply:

- MOUNTING TOOLS
- MONITORING AND CONTROL SYSTEMS
- PERMA AUTOMATIC LUBRICATION SYSTEMS
- POWER TEAM HYDRAULICS

All products are tested and CE certified. Bega is VCA certified. We carry out electrical tests in compliance with NEN 3140.

Please do not hesitate to contact our Sales department or one of our dealers. We are happy to be of service.

Visit www.bega.nl for our complete range

Bega Special Tools,
Schorsweg 15,
NL-8171 ME Vaassen, The Netherlands
T + 31 578 668000
F + 31 578 668080
sales@bega.nl
www.bega.nl

© Bega International BV.

We reserve the right to alter technical specifications without prior notice.



BETEX®

perma®

POWER TEAM®



CE



**TOP
QUALITY
SINCE
1978**



DISMOUNTING & HYDRAULIC TOOLS

INDEX

BETEX MSP 2/3-arm mechanical pullers, self-centering	2
BETEX KZZ key-drawer for professional removal of keys	3
BETEX Mechanical pullers (inner and outer pulling)	4-9
BETEX HP 2/3-arm hydraulic pullers with integrated pump and cylinder	10
BETEX HSP 2/3-arm hydraulic pullers, self-centering, with integrated pump and cylinder	11
BETEX HXP 2/3-arm hydraulic pullers, self-centering, with separate handpump	12
BETEX HPP hydraulic push puller, mounting (pushing), inner and outer pulling	13
BETEX Accessory sets, Bearing splitters for HP, HSP, HXP, HPP	14
BETEX Accessory sets, Tri-section plates for HP, HSP, HXP, HPP	15
BETEX Mobipuller, mobile hydraulic puller 25t and 50t	16-17
BETEX 50 HXPM mobile 2/3-arm hydraulic puller, self-centering, 50t	18-19
BETEX Mobilift workbench	20
BETEX Shop presses, 10t, 25t	21
BETEX Cylinders, SSS, single acting spring return	22
BETEX Cylinders, SCS, shorty, flat, compact	23
BETEX Cylinders, SLS, shorty, flat, compact	24
BETEX Cylinders, SHS, center hole cylinders	25
BETEX Cylinders, DAC/CJ, double acting, low-height jacks	26
BETEX Cylinders, SSA, aluminium cylinders	27
BETEX Heavy duty handpumps, PB series	28
BETEX Aluminium handpumps, AHP series	29
BETEX Hydraulic spreaders for lifting and separating	30
BETEX Portable powerkits for maintenance jobs	31
BETEX Toe jacks	32
BETEX Accessories: hoses, gauges, adapters, valves	33
BETEX Accessories: connectors, nipples, adapters	34

MECHANICAL PULLERS

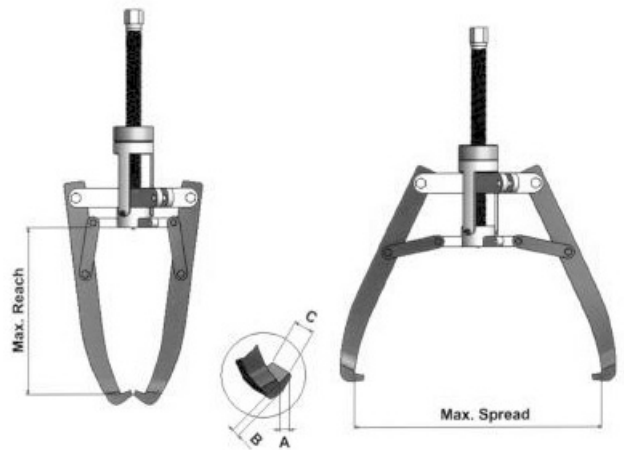
BETEX MSP 2/3-arm pullers, **self-centering**



Safe and easy dismantling of bearings, couplings, rings etc.

Ergonomic design, easily operated by one person!

- **Practical!**
Self centering 2 or 3-arm puller with self-locking system.
Easy to convert and easy to use in every position.
- **Safe!**
The arms adjust themselves simultaneously, either inwards or outwards. Self-locking system guarantees arms neither bend nor deflect.
- **Economical!**
2- or 3-arm combination puller. Two pullers for the price of one.
- **Strong!**
The harder the force, the tighter the jaws grip. The arms cannot bend or deflect.



Advantages of self-centering pullers:

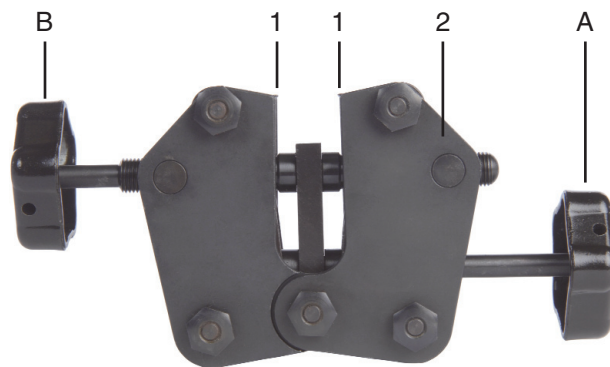
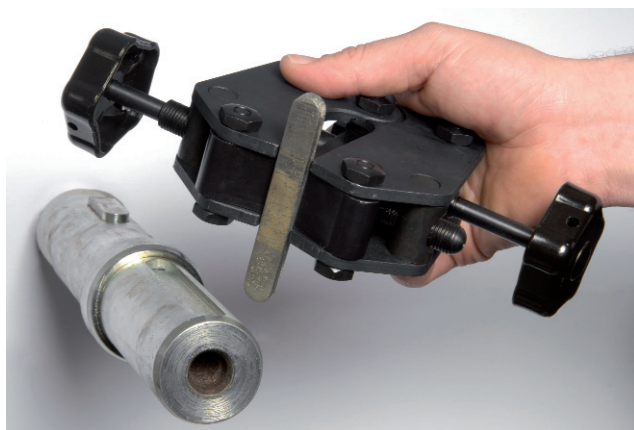
- Prevent damage to shaft and workpiece being pulled.
- Work efficient and save time.

2, 3, 5, 8 and 10 ton capacity!

BETEX MSP 2/3 Mechanical self-centering pullers

Type	Art.no.	Cap. ton	Max. shaft length mm	Max. spread mm	A mm	B mm	C mm	Weight Kg
MSP 2/3-120	798250	2	80	120	8	6	15	1.6
MSP 2/3-180	798300	3	120	180	6	7	15	2.3
MSP 2/3-270	798350	5	160	270	11	10	25	4.3
MSP 2/3-300	798400	8	210	300	13	14	27	6.1
MSP 2/3-380	798450	10	250	380	14	10	29	9.6

KZZ KEY-DRAWER



For professional removal of keys.

The Betex KZZ Key-drawer (Item No. 4900011) is used for the safe removal of keys from the shafts of any type of machine, motor, blower, compressor, etc. For keys from 5 mm to 35 mm in width.

Safe!

You no longer need a hammer and chisel.

Advantages

- Safe and fast removal.
- Perpendicular removal.
- No damage to shafts or keys.
- Shafts remain straight.
- Saves time, labour and costs.
- Jaws are made from specially tempered steel.
- Screw has left and right trapezium thread.

Easy to use

1. Turn wheel (A) to move the jaws (1) up or down so that they are aligned with housing (2).
2. Turn wheel (B) to fit the size of the key allowing ± 1 mm space.
3. Turn wheel (B) **hand tight** to secure the key with the jaws.
4. Then turn wheel (A) to extract the key perpendicularly.
5. Turn wheel (A) to move the jaws down; turn wheel (B) to open the jaws and free the key.

Typ	Art.no.	Min. Spread mm	Max. Spread mm	Weight Kg
KZZ	4900011	5	35	2,2

MECHANICAL PULLERS

BETEX 46

Simple, handy 2-arm puller for parts gripped externally like pulleys, bearings, rings, etc. Suitable for removing fans from electric motors

During operation the arms can not slip because they are pressed against the cross bar. The higher the necessary pulling force, the stronger the arms are pressed against the cross bar. The one-hand operation of the puller permits easy use even under unfavourable conditions. A spring inside the housing guarantees a continual clamping of the forged alloy steel arms.



BETEX 46 is available in 4 types

Type	Max. diam. mm	Max. shaft length mm
46-200	60	40
46-000	75	60
46-010	110	100
46-020	220	200

BETEX 47

Patented special 2-arm bearing pullers

This bearing puller is particularly suitable for extracting bearings, bearingrings etc. that fit flushly with other parts. This system is generally applied when dismantling bearings from anchors, pump shafts etc.



BETEX 47 is available in 3 types

Type	Max. diam. mm	Max. shaft length mm
47-100	45	65
47-200	90	100
47-300	150	150

BETEX 48/49

2/2 bearing splitters and pullers

Betex no. 48/49 is designed for dismantling flush-fitting bearings and other parts where an ordinary puller would be unable to get a proper grip. Suitable for various applications.

BETEX 48 is available in 5 types

BETEX 49 is available in 4 types

Type	Max. diam. mm	Counter support	Max. shaft length mm	
			standard	with extension
48-060	60	49-100	150	250
48-075	75	49-100	150	250
48-115	115	49-200	200	300
48-150	150	49-300	300	400
48-210	210	49-400	300	400



MECHANICAL PULLERS

BETEX 52

Patented self-centering 3-arm pullers (mechanical and hydraulic) for diameter Ø40 mm till Ø640 mm

The 3 arms of these pullers adjust themselves simultaneously and symmetrically, inwards or outwards. There is no possibility of the arms bending or deflecting. Hydraulic screws with a 20 ton capacity are available for use in combination with the two largest pullers. The thread of the screws is in no way affected by the building up of hydraulic pressure, thus keeping wear and tear to the screws down to a minimum.



BETEX 52 with mechanical screw is available in 6 types

Type	Max. diam. mm	Max. shaft length mm
52-085	85	65
52-130	130	105
52-230	230	150
52-295	295	235
52-390/394*	390	270
52-640/644*	640	300

* these types may be converted into hydraulic tools simply by replacing the mechanical screw and the screw-bush with a 20 ton mechanical hydraulic screw.

BETEX 54

Patented 2-arm pullers for diameter Ø40 mm till Ø350 mm

This 2-arm puller is extremely well-suited to applications involving the extraction of bearing-rings, innerrings (NU-NJ). Reversal of the arms makes internal dismantling also possible. The self-locking system guarantees that the arms will not deflect. Extended and extra-extended arms can be supplied for long shafts.



BETEX 54 with standard arm-length is available in 6 types

Type	Max. diam. mm	Maximum shaft length mm		
		standard	with extension	with extra extension
54-100	80	100	200	250
54-200	120	125	200	250
54-300	160	150	250	300
54-400	200	175	250	300
54-500	250	200	300	400
54-600	350	250	300	400

MECHANICAL PULLERS

BETEX 56

Internal 4-arm bearing pullers with interchangeable claws (in case) for total 66 bearings till Ø105 mm

This 4-arm bearing puller has been specially developed to extract ball-bearings from casings and shafts using a single action. This concerns the 6000, 6200, 6300 and 6400 series. 66 different ball-bearings can be removed with these three sets of pullers.

BETEX 56 is available in 3 sets

Set	Max. shaft length mm	Claws (4 per set)	No of bearings	
56-020	65	3 sets	12	
56-120	90	5 sets	30	
56-220	150	5 sets	24	
Set	Ball-bearing 6000	Ball-bearing 6200	Ball-bearing 6300	Ball-bearing 6400
56-020	6004 t/m 6006	6200 6205	6300 6302	-
56-120	6007 t/m 6020	6206 6212	6303 6308	6403 6405
56-220	6021	6213 6219	6309 6319	6406 6412



BETEX 44

Hydraulic 8/15 tons mini-press

When using mechanical screws, much of the force is lost as a result of the friction caused by the thread. This minipress administers a shock to the part which is to be extracted. This enables optimal use to be made of BETEX pullers 52 and 54, without loss of force or wear and tear to screws. Note*: may be used from 49-200, 52-230 and 54-300 and upwards.

* application: heavy duty pullers, BETEX 49-200, 52-230 en 54-300 upwards * height: 35 mm

Betex 44 is available in 2 types

Type	Capacity ton	Stroke mm
44-080	8	7
44-150	15	10



BETEX 625/630

Shaft protector sets for shaft centers and hollow shafts

These shaft protectors are indispensable between shaft and bearing puller while dismantling bearings, couplings etc. There are two types: 625 for protecting shaft centers and 630 for hollow shafts.

Use of shaft protectors prevents distortion to the shaft centers and the screw.



BETEX 625 consists of a 6-piece set

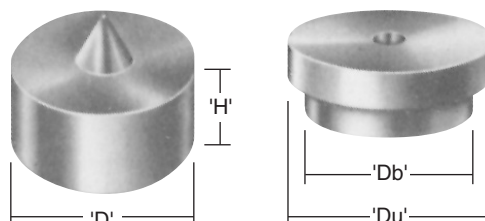
'D' min. = Ø 19 mm 'H' min. = Ø 16 mm
'D' max. = Ø 38 mm 'H' max. = Ø 19 mm

BETEX 630 'S' consists of a 11-piece set

'Db' min. = Ø 19 mm 'Du' min. = Ø 25 mm
'Db' max. = Ø 51 mm 'Du' max. = Ø 64 mm

BETEX 630 'T' consists of a 6-piece set

'Db' min. = Ø 54 mm 'Du' min. = Ø 67 mm
'Db' max. = Ø 76 mm 'Du' max. = Ø 89 mm



MECHANICAL PULLERS

BETEX 62

Internal expander puller up to a bore of Ø 150 mm

This special expander system has been developed to facilitate rapid and effective dismantling under difficult conditions, e.g. in 'blind holes'. The multiple adjustable jaws (up to 6) ensure the correct grip from behind the bearing, bush etc.

Bearings, bushes, sealings etc. are extracted effortlessly.

Smaller, larger and longer sizes are available on request.



BETEX 62 is available in 3 sets

The two sets together come in a free carrying case

Counter support type	Suitable for expanders	Expander	For diameter mm	For max. depth mm		
62-100	62-004→ 62-030	62-004	4-7	35	*	****
		62-007	7-10	35	*	****
		62-010	10-14	35	*	****
		62-014	14-20	45	*	****
		62-020	20-30	50	*	****
62-200	62-040→ 62-070	62-030	30-40	90	*	****
		62-040	40-50	95	**	****
		62-050	50-60	95	**	****
		62-060	60-70	95	**	****
62-200/62-300	62-070 → 62-0125	62-070	70-80	95	**	****
		62-080	80-100	140	***	
		62-0100	100-125	140	***	
		62-0125	125-150	140	***	

BETEX 62-9

Slide hammer puller

Used in combination with the internal puller.

Slide hammer weight: 0,9 kg

2 sizes with strokes of 90 mm and 300 mm

2 connecting threads (M10 and M14x1,5)

The advantage of the slide hammer is that it can be used independent of any supporting face. After positioning the internal puller the slide hammer is

connected through the hexagon adaptor. We recommend:

Up to bore-diameter 39,5 mm Nr. 62-9092

Up to bore-diameter 79,5 mm Nr. 62-9302

* = set 1 62-101

** = set 2 62-201

*** = set 3 62-301

**** = combination set 62-105, including free carrying case

MECHANICAL PULLERS

BETEX TRACTA 63, 64

These systems are unique and suitable for difficult dismounting jobs of roller bearings.

Advantages:

- For all kinds of roller bearings
- Shaft Ø 10,5 mm up to Ø 100 mm, larger sizes on request
- Dismounting from house and shaft in one act
- Also for flush fit bearings
- Unlimited shaft lengths through extensions
- 360°C grip over full bearing
- Hydraulic type on request
- Suitable for serial dismounting
- Prevents damage to bearing, bearing house and shaft!

BETEX TRACTA 63 and 64

Type	Shaft diam. mm	Outside diam. mm	Max stroke mm	Max shaft length mm	Max shaft length mm with extra extension
63-100	10,5	26	62	95	165
63-200	18	35	64	100	180
64-400	30,5	60	78	135	235
64-500	46	75	80	150	250
64-600	66	100	92	170	270
64-700	77	125	120	205	305
63-800	100	140	150	240	390

Larger models on request



TRACTA 63



TRACTA 64

MECHANICAL PULLERS

Collets for BETEX 63 and 64

There are 4 different pulling principles that can be applied, depending on bearing type. To define the correct collet the following is mandatory:

Principle 1: grip on inner bearing ring. Bearing is dismantled in one act, from shaft and bearing house.

Example: self aligning ball bearings, four point bearings and ball bearings with split innering.



Principle 1

Principle 2: grip on rollers, independent of number of rolls. Also when bearing is flush fit.

Example: wheel bearings, tapered bearings.



Principle 2

Principle 3: grip on bearing inner ring.

Example: tapered roller bearings.



Principle 3

Principle 4: grip inside or behind bearing inner ring, or behind bearing outside ring.

Example: cylindrical roller bearing, lowest innering of the ball bearings, outside ring of the needle roller bearings, spherical roller bearings, NU-, NJ-bearing bushes, ABS-rings, bushes, gear wheels.



Principle 4

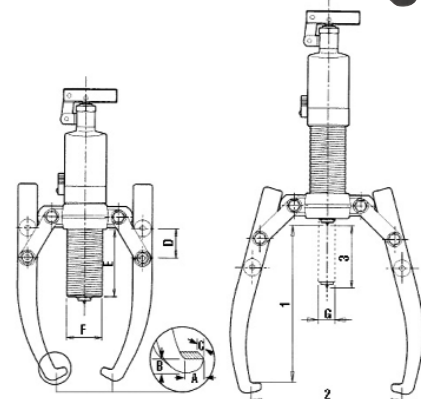
HYDRAULIC PULLERS

BETEX HP 2/3-arm pullers, with integrated pump and cylinder



Compact, ergonomic design, easily operated by one person!

- **Multifunctional:**
These HP-pullers are ideal for pulling a wide variety of parts, including bearings, bushings, wheels, gears and pulleys. Applications for HP-pullers will be found in motor repair shops, service companies, maintenance shops, industry, mining, paper mills, chemical plants, shipping, offshore, etc.
- **Compact:**
The self contained hydraulic pump and cylinder save space, as you don't need a separate pump, hose or puller.
- **Strong:**
The harder the force, the tighter the jaws grip. The arms cannot bend or deflect.
- **Economical:**
2/3-arm combination puller, 2 pullers for the price of one, including integrated pump and cylinder!



- **Safe:**
The improved integral safety release valve prevents overloading and ensures that you will never exceed the maximum power capacity.
- **Versatile:**
Various accessories are available. Sets are supplied in practical PE case and consist of a puller block, connecting rods and a set of bearing splitters.

4, 6, 8, 12, 20 and 30 ton capacity!

BETEX HP 2/3 Hydraulic pullers

For accessory sets see page 14, 15.

Type	Art.no.	Cap. ton	Max. shaft length mm	Max. spread mm	Stroke mm	A mm	B mm	C mm	D mm	E mm	F mm	G mm	Weight Kg
HP 43 *	791000	4	185	275	60	11	6	22	32	84	42	22	4.5
HP 63 *	792000	6	215	300	85	11	10	25	51	122	45	25	6.5
HP 83 *	793000	8	230	350	85	11	10	25	51	122	50	25	6.5
HP 123 *	794000	12	270	375	85	14	10	29	51	118	60	28	8.0
HP 203**	796000	20	360	520	111	20	27	33	60	161	80	40	22.0
HP 303 **	797000	30	360	550	111	20	27	38	60	155	68	50	32.0

* Incl. safety net ** incl. safety blanket

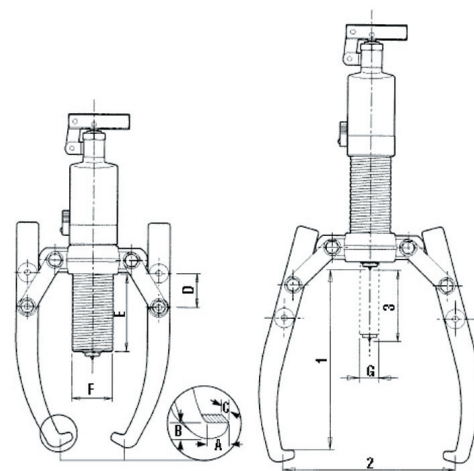
HYDRAULIC PULLERS

BETEX HSP 2/3-arm pullers, **self-centering**, with integrated pump and cylinder



Compact, ergonomic design, easily operated by one person!

- **Practical!**
Self-centering, easy to convert, 2-arm or 3-arm puller. The arms slide inwards or outwards simultaneously.
- **Compact!**
The self contained hydraulic pump and cylinder save space, as you don't need a separate pump, hose or puller.
- **Strong!**
The harder the force, the tighter the jaws grip. The arms cannot bend or deflect.
- **Economical!**
2/3-arm combination puller, 2 pullers for the price of one, including integrated pump and cylinder!
- **Safe!**
The integral safety release valve prevents overloading and ensures that you will never exceed the maximum power capacity.
- **Versatile!**
Various accessories are available. Sets are supplied in practical PE case and consist of a puller block, connecting rods and a set of bearing splitters.



Advantages of self-centering pullers:

- Prevents damage to shaft and workpiece being pulled.
- Efficient and saves time.
- Can be used in any position.
- Adapters included.

4, 6, 8, 12, 20 and 30 ton capacity!

BETEX HSP 2/3 Hydraulic self-centering pullers

For accessory sets see page 14, 15.

Type	Art.no.	Cap. ton	Max. shaft length mm	Max. spread mm	Stroke mm	A mm	B mm	C mm	D mm	E mm	F mm	G mm	Weight Kg
HSP 43*	791500	4	190	325	60	13	10	22	-	40	42	22	8.0
HSP 63*	792500	6	230	380	70	13	10	22	-	50	45	23	10.0
HSP 83*	793500	8	280	450	85	13	13	27,5	-	70	50	25	12.0
HSP 123*	794500	12	305	485	85	15	16,5	29	-	70	60	28	15.0
HSP 203**	796500	20	365	570	111	20	27	33	-	62	80	40	25.0
HSP 303**	797500	30	465	680	111	20	27	38	-	85	98	50	36.0

* Incl. safety net ** incl. safety blanket

HYDRAULIC PULLERS

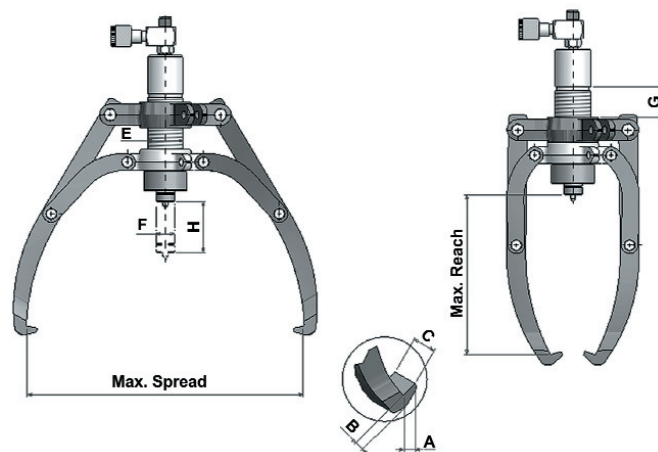
BETEX HXP 2/3-arm pullers, **self-centering**



Safe and easy dismantling of bearings, couplings, rings etc.

Separate 2-stage handpump available.

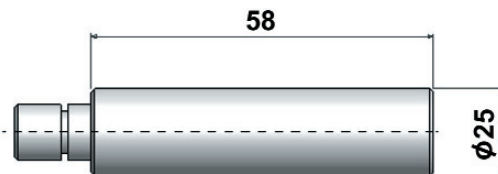
- **Practical!**
Self-centering, easy to convert, 2-arm or 3-arm puller. The arms slide inwards or outwards simultaneously.
- **Safe!**
Arms can never deflect!
- **Economical!**
2/3-arm combination puller, 2 pullers for the price of one.
- **Strong!**
The greater the pulling force, the tighter the jaws grip!
The arms cannot bend or deflect.



Advantages of self-centering pullers:

- Prevent damage to shaft and workpiece being pulled.
- Work efficient and save time.
- Accessory sets are available for the 8 and 12 ton pullers.
- Supplied in handy carrying case.

8, 12, 20, 30 and 50 ton capacity!



BETEX HXP 2/3 Hydraulic self-centering pullers

For accessory sets see page 14, 15, 29, 33 and 34.

Type	Art.no.	Cap. ton	Max. shaft length mm	Max. spread mm	Stroke mm H	Pump tip mm			Jaw tip mm			Weight Kg
						E	F	G	A	B	C	
HXP 83*	793600	8	280	450	85	42	22	40	13	10	22	9.0
HXP 123*	794600	12	305	485	85	50	25	70	13	13	27.5	11.7
HXP 203**	796600	20	365	570	111	60	28	70	15	16.5	29	24.0
HXP 303**	797600	30	465	680	111	80	40	62	20	27	33	34.0
HXP 503**	799600	50	455	860	330	98	50	85	20	27	38	140.0

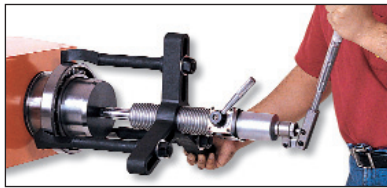
* Incl. safety net ** incl. safety blanket

HYDRAULIC PULLERS

BETEX HPP Push Puller



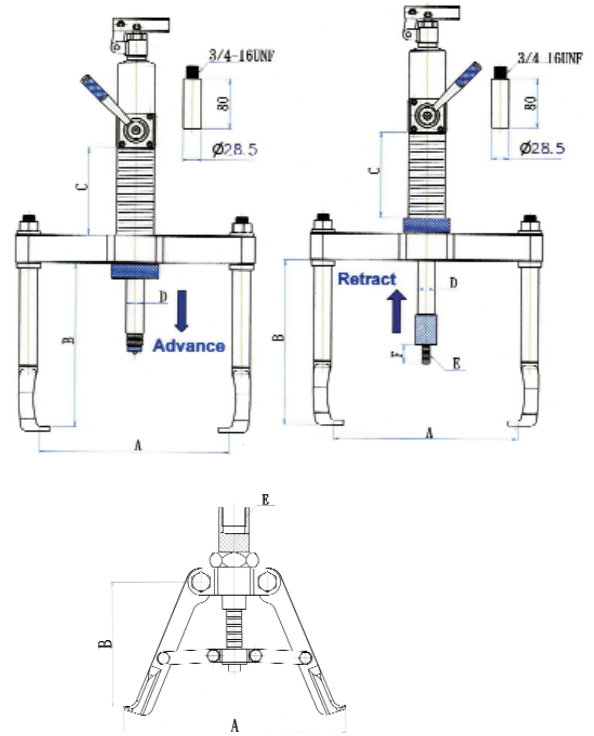
Pushing



Outer pulling



Inner pulling



Push Puller: three-in-one tool

This unique patented design provides end users with a three-in-one tool to easily and safely fit or remove bearings and sleeves using either their outer or inner edges. The push puller is specially designed for combined pushing and pulling. This creates one tool that uses even force to enable very easy pushing and pulling. The pushing jaw fits on the bearing's inner ring, preventing the transmission of forces and/or heat through the outer ring to the moving parts, minimizing the risk of bearing damage.

User-Friendly

- Unique, patented double-acting pump body to provide pushing and pulling force.
- Unique jaw design for mounting and outer ring pulling without removing and changing.
- Three-jaw structure always provides an even and constant force, whether mounting, outer ring pulling or inner ring pulling.
- Depends on user requirements - the extension bars can be used where necessary for extra reach.

- Self-centering design of the inner puller always provides an even force and prevents jaws sliding off during operation.

Safe

- The built-in safety valve ensures user safety and prevents damage to tool and job.
- The built-in safety valve prevents the user from being harmed and the job from being damaged as rated pressure cannot be reset or adjusted.
- Most parts are forged of SCM440 alloy steel, creating a very safe and durable product.

Cost-reducing

- Built-in safety valve ensures the tool is always operated as per the rated pressure, significantly extending tool life.
- Three-in-one design reduces preparation, tool-reset time and duration of operation.
- This push puller is ideal for fitting and removing a wide variety of press-fit parts, including bushings, wheels, bearings, gears and pulleys.

BETEX Push Puller / three-in-one

For accessory sets see page 14, 15.

Type	Operations	Output tons	A mm	B mm	C mm	D mm	E	F mm	Weight Kg
HPP123	Pushing	8	44-280	270	140	28	M12-P1.75	30	19,5
	Outer pulling	12	85-300	260	140	28	-	-	
	Inner pulling	8	110-210	130-150	-	-	1"-12UNF	-	

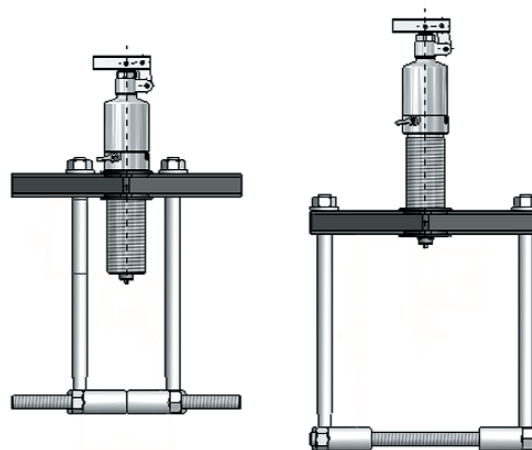
ACCESSORY SETS

Bearing splitters

This accessory set consists of:

- 1 puller block
- 2 connecting rods (legs)
- 1 set of bearing splitters for a min./max Ø 25-225 mm

You can use the cylinder from the HP/HSP/HXP series.

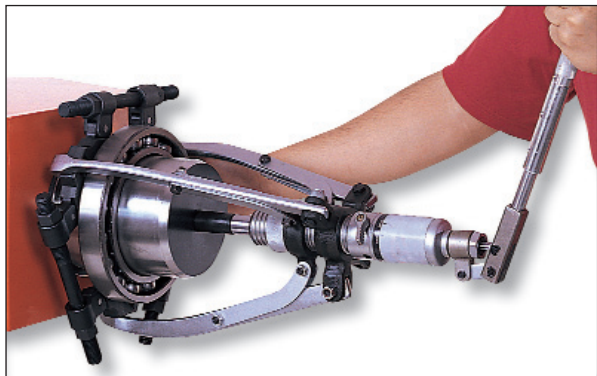


ACCESSORY SETS FOR 4, 6, 8, 12 TON PULLERS HP, HSP, HXP, HPP

Type	Art.no.	Cap. ton	Shaft length mm	Min/max Spread mm	Weight kg
Acc. Set HP 43, HSP 43	791100	4	250	Ø 15-110	8.5
Acc. Set HP 63, HSP 63,	792100	6	280	Ø 25-150	12.5
Acc. Set HP 83, HSP 83, HXP 83	793100	8	280	Ø 40-150	12.5
Acc. Set HP 123, HSP 123, HXP 123, HPP 123	794100	12	325	Ø 45-225	18.0

ACCESSORY-SETS

Tri-section plates



Easy to use

The tri-section plates are specially designed to be used in conjunction with the three-armed pullers. The unique and patented swivel design creates maximum spread and applies even force at the most efficient point. The plates grip behind the inner and outer rings of the bearing, preventing the pulling force from being transmitted through the moving parts, minimizing the risk of bearing damage.

Safe

The Tri-section plate's unique design ensures the application of force at the most efficient point – the inner ring and outer ring together – and thereby requires less force for removal than required if only pulling on the outer ring. The firm grip behind a bearing's inner and outer rings ensures that the pulling forces are not transmitted through the moving parts, preventing damage to the bearing. Most parts are forged SCM440 alloy steel, creating a very safe and durable product.

User-friendly

- Unique, patented swivel design creates maximum spread.
- The tri-section construction provides even-force distribution, preventing bearings from locking and/or tilting on the shaft during removal.
- Suitable for use in conjunction with all three-armed hydraulic pullers.
- Available in a wide range, covering the most common shaft sizes.

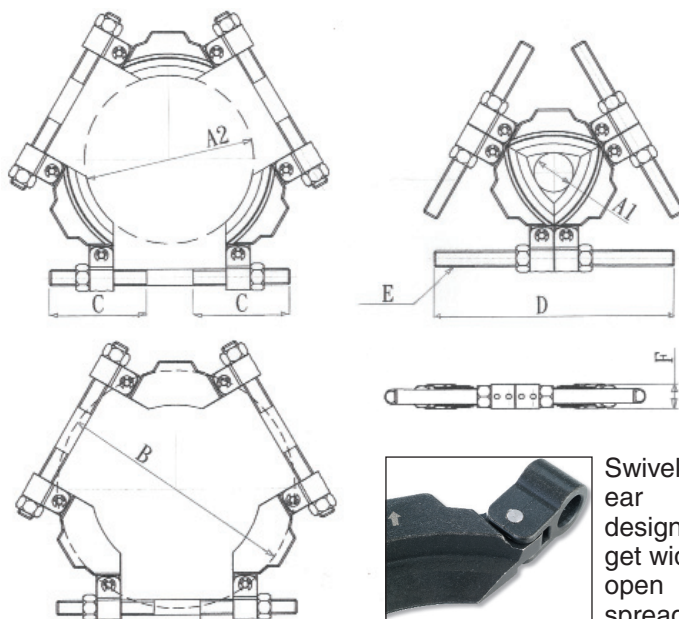
Use in combination with

Tri-section 210: HP/HSP43, 63
 Tri-section 340: HP/HSP/HXP 83, 123, HPP 123
 Tri-section 495: HP/HSP/HXP 203, 303

Cost-reducing

- The patented swivel design creates a bigger spread than all other splitters, resulting in considerable cost savings.
- The unique design creates the most efficient and convenient system covering common shaft sizes.
- Eliminates the need for extra accessories, reducing future costs.

The Tri-section plates series consist of 3 different sizes of tri-section plates that are suitable for shafts of max. Ø ranging from 50 to 495 mm (2" to 19.5").



Swivel ear design to get wide open spread.

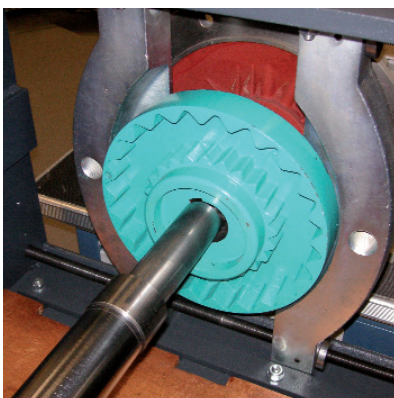
Type	Art.no.	Available shaft diam		Spread B (mm max)	C mm	D mm	E	F mm	Weight kg
		A1 mm	A2 mm						
Tri-section 210	791210	50	210	280	115	285	3/4"-16UNF	31	5.5
Tri-section 340	791340	90	340	460	170	430	7/8"-14UNF	45	16.5
Tri-section 495	791495	140	495	660	240	600	1"-14UNF	61	41

MOBIPULLER

Mobile hydraulic puller



**25
OR
50
TONS**



THE BETEX MOBIPULLER

is a heavy duty, mobile hydraulic puller. It is used for dismantling bearings, couplings, gears and other parts, with relative speed and ease. The Mobipuller excels through functional and ergonomic operation. It is stable, mobile and adjustable in height.

A maximum tractive force of either 25 or 50 tons can be applied with diameters of up to 430 mm. To ensure safe and easy operation the electrical models are equipped with remote control, safety cage and pressure gauge.

A1: In standard position mm:	575 - 575/500
A2: In extended position mm:	955 - 955/800
B1: Frame length in standard pos. mm:	1210
B2: Frame length in extended pos. mm:	1590
Position high / low mm:	1100/1650
Dimensions L x W mm:	1470x1040
C: Diameter of jaws mm:	430
D: Set-up height mm:	900/1430
Adapters mm (155 mm):	Ø 40,50
Weight kg:	460

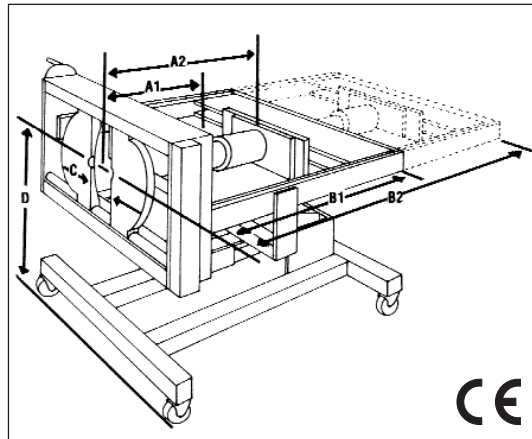
Remote control



All models are equipped with a safety cage for personal safety



Meaning of codes:	
25-50	tractive force in tons
430	max. diameter in mm
H	manual hydraulic
E	electrical hydraulic
V	mobile
A	remote control
S	max. stroke in mm
D	double acting



Auxiliary tools for dismantling of inner rings and delicate components.

Type	Art.no.	Cap. Ton	Stroke cylinder	Pump hydraulic manual/electric	In standard position mm	In extended position mm
25 HV 430 S 260	700001	25	260	manual	575	955
25 EVA 430 S 260	700002	25	260	single acting electric	575/500	955
50 HV 430 S 260	700003	50	260	manual	575/500	955/880
50 EVA 430 S 260	700004	50	260	single acting electric	575/500	955/880
50 EVA 430 S 340	700005	50	340	single acting electric	575/500	955/880
50 EVAD 430 S 340	700006	50	340	double acting electric	450	830
50 EVAD 430 S 460	700007	50	460	double acting electric	300	680

HYDRAULIC PULLERS

BETEX 50 HXPM - MOBILE 2/3-arm puller, 50 t **self-centering**



For dismantling of transmission parts, such as bearings, couplings, bushes, gear wheels, etc.

- **Practical!**
The puller is easy to manoeuvre, adjustable in height and 5° vertically adjustable.
- **Fast!**
The complete stroke is 330 mm. Three adapters (extensions) are included for a max stroke of 475 mm.
- **Safe!**
The arms move inwards and outwards simultaneously and cannot deflect. A safety release valve prevents overload and ensures that you never exceed the maximum power capacity.

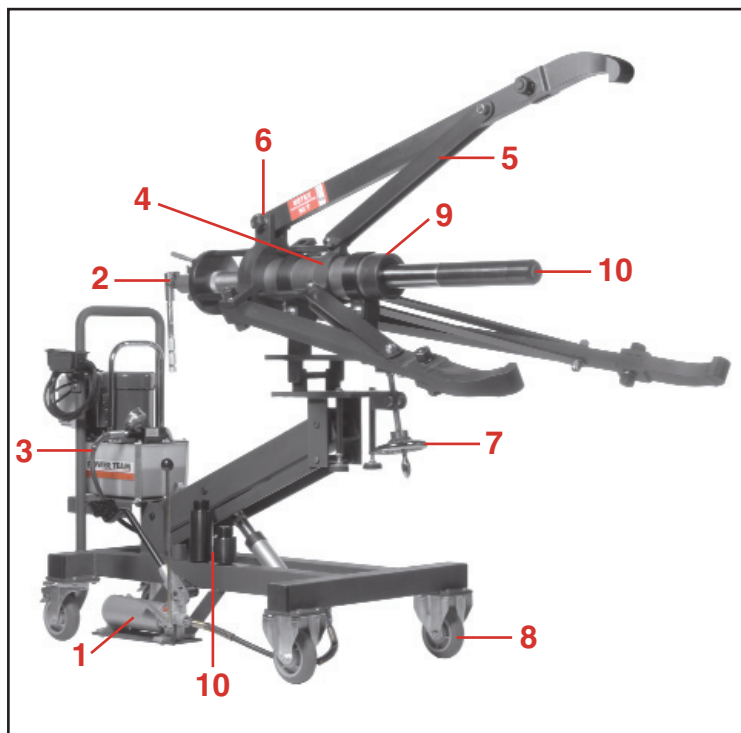
50 ton capacity!



BETEX 50 HXPM MOBILE HYDRAULIC 2/3-ARM PULLER, SELF-CENTERING

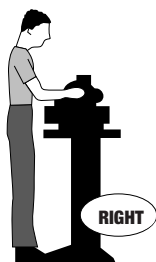
Type / Art. no.	50-HXPM-1250-S330 / 700014
Capacity in tons	50
Max. stroke in mm	330
Max. spread in mm	1,250
Min. spread in mm	75
Max. shaft length in mm	665-720
Operating main cylinder	Electric-hydraulic pump, 230V - 16A, with remote control
Operating height adjustment	with footpump
Operating self-centering jaws	with handpump, double-acting
Four adapters (in mm)	2 x Ø 40, 2 x Ø 50, length: 155
Min. height (from the centre) in mm	820
Max. height (from the centre) in mm	1.370
Manometer	700 bar
Weight in kg	372

Including safety blanket



- 1 Footpump for height adjustment.
- 2 Double-acting handpump for holding, opening and closing the jaws for safe, secure grip on job.
- 3 Electric-hydraulic pump, 230V - 700 bar, operates the cylinder.
- 4 Self-centering; the jaws are evenly advanced or retracted.
- 5 The design prevents the puller jaws from slipping or deflecting.
- 6 Puller can easily be converted from 3- to 2-arm configuration.
- 7 The puller is adjustable 5° vertically.
- 8 The cart has two swivel casters (self-locking) and has two rigid casters.
- 9 The hydraulic cylinder is a 2-stage spring-return type with a max. working pressure of 700 bar (50 ton).
- 10 Four adapters (cylinder extensions) with a total length of 620 mm are included.

MOBILIFT WORKBENCH



A correct working height and room for the feet allows for a good working posture, with back straight, the worktop close to the body.

Workbench too low, no room for feet under the worktop.

IDEAL IN ANY WORKSHOP

The Betex Mobilift

is a modern design adjustable bench with a unique **one-arm lifting principle**.

The bench is mobile and stable. The use of a hydraulic pump means no cables on the work floor. All these characteristics make the Mobilift very popular in workshops, so that it soon becomes indispensable.

The Mobilift workbenches are available in 2 types: capacity 400 or 1000 kg.

Advantages:

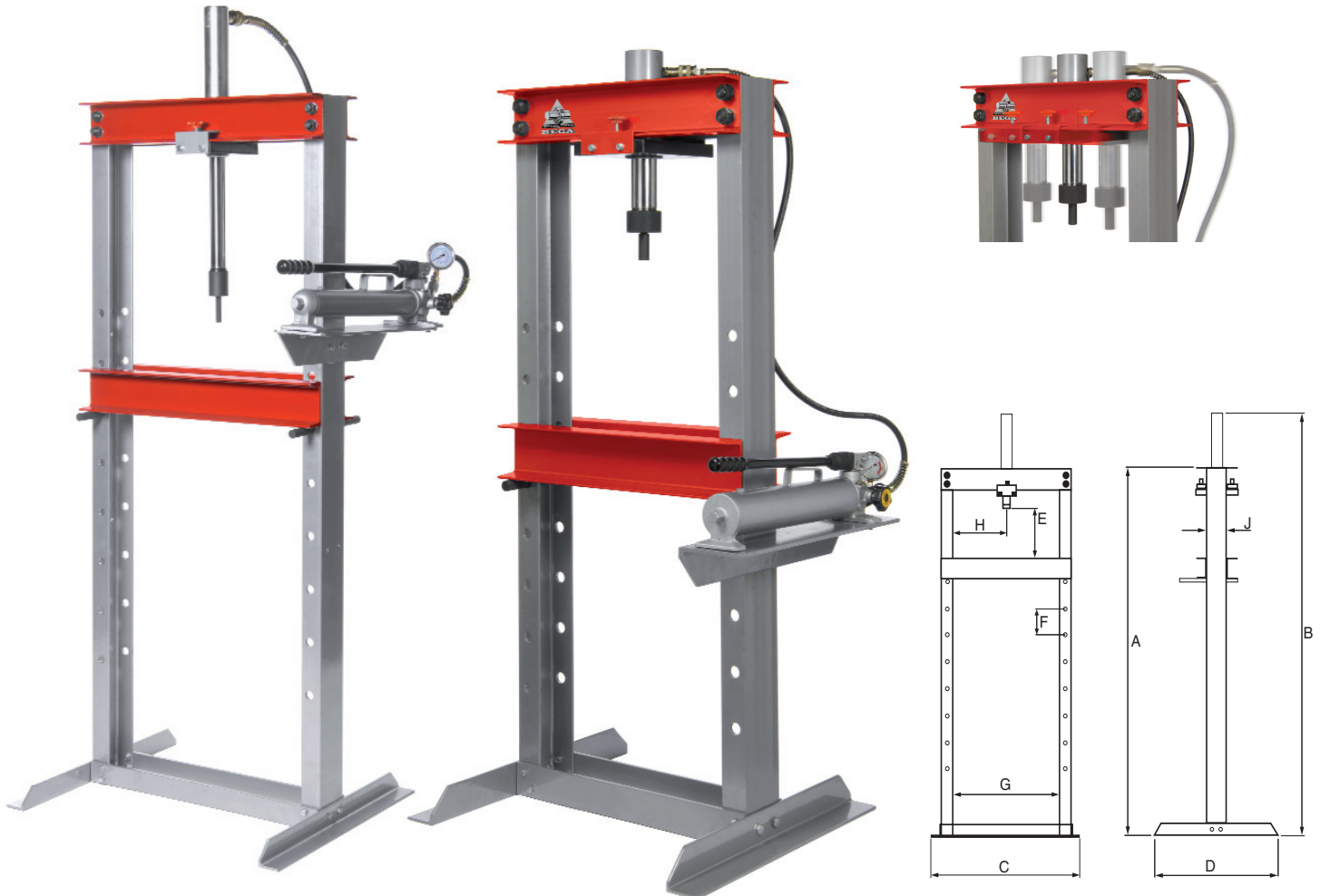
- Very stable, therefore very suitable as a workbench.
- Extra safe due to the lack of a 'scissors' movement.
- Wooden worktop prevents work from slipping.
- 2 lockable drawers.
- Simple controls.
- **Promotes a good working posture!**

Type/art. nr.	H400/260400	H1000/261000
Carrying capacity	400 kg	1000 kg
Dimensions in lowest position (lxwxh)	1500x950x620	1450x860x620
Worktop dimensions (lxw)	1220x800	1220x800
Working height: minimum	620	670
maximum	1160	1160
Height adjustment	Hydraulic footpump	Hydraulic footpump
Security devices	check valve	check valve
Base/frame	2 casters with brake, 2 rigid casters, Ø 160, wheel width 50	2 casters with brake, 2 rigid casters, Ø 160, wheel width 50
Wheel basis width: length	630 1080	630 1080
Tool drawers (lxwxh) (2 pcs with padlock) (dimensions in mm)	500x300x100	500x300x100

WORKSHOP PRESSES

Professional workshop presses with hand, air or electric pump

- Robust steel frame ensures maximum stability and prevents bending.
- Multiple working positions for press bed.
- Steel crossbars prevent the frame from bending when loaded.
- Includes gauge for precise control of the press force.
- Available in 2 models: 10 en 25 ton.
- Single-acting and spring-return ram with 10" stroke is horizontally moveable on head channel.
- Also available with electric- or air-hydraulic pump.



BETEX WSP 10 ton

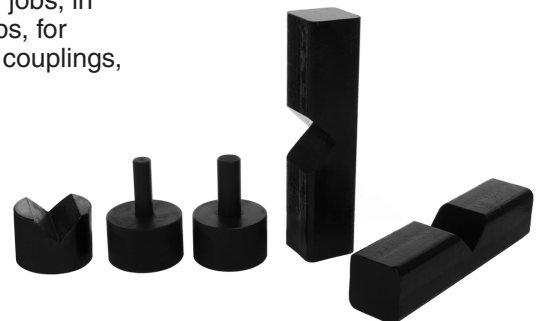
Ideal for mounting and dismantling jobs, like repairing motors, transmissions, removal and installation of gears, bearings and other parts.

BETEX WSP 25 ton

Ideal for heavy duty pressing jobs, in garages, industrial work shops, for mounting and dismantling of couplings, bearings and other parts.

Type	Cap. ton	Stroke mm	Type pump	Work force bar	Type cilinder	Weight kg
WSP 10	10	250	hand	700	single acting	87
WSPA 10	10	250	air	700	single acting	88
WSPE 10	10	250	electric	700	single acting	90
WSP 25	25	250	hand	700	single acting	145
WSPA 25	25	250	air	700	single acting	146
WSPE 25	25	250	electric	700	single acting	148

cap. up to and including 200 ton available.



WSP shop presses are including adaptors and accessories to support work: V adaptor, V block and 2 pushing adaptors.

Type	A mm	B mm	C mm	D mm	E mm	F mm	G mm	H mm	J mm
WSP 10 ton	1650	1900	740	610	225-1065	120	540	54-490	100
WSP 25 ton	1650	1900	790	700	232-1072	120	540	50-490	125

CYLINDERS

SSS SERIES: Single acting, spring return



Model: SSS-Series

Capacity : 5-100 ton
 Stroke : 25,4-362 mm
 Max. working pressure : 10,000 psi / 700 Bar

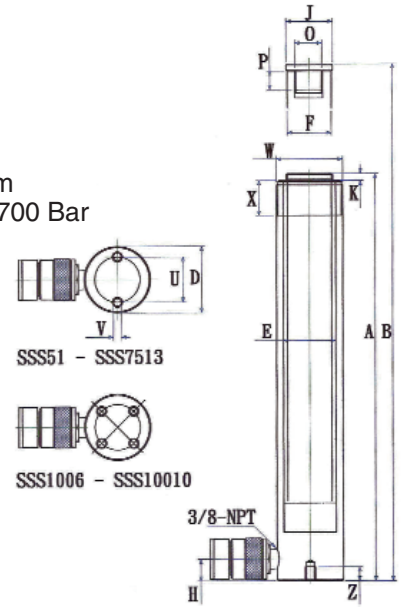
All rams are single acting with spring return. Pistons hard chromed. Rams inside roll-polished, outside blasted and chromed.

Power sources:

Handpumps, Footpumps and air/hydraulic pumps and electric pumps.

Pump and cylinder sets:

All cylinders are available as sets (cylinder, gauge, couplers, hose and pump) for your ordering convenience.



Type	Capacity ton	Stroke mm	Oil cap cm ³	A Height mm Retracted	B Height mm Extended	D mm	E mm	F mm	H mm	J mm	K mm	O ø un	P mm	U mm	V ø	W un	X mm	Z mm	Weight Kg	
SSS51	5	27	19	110	137								14						1	
SSS53		76	54	165	241								14						1.5	
SSS55		127	90	216	343	38	30	25.4	19	25	6	3/4"-16	14	25	1/4"-20un	1/2"-16	28	14	1.9	
SSS57		181	128	273	454								16							2.4
SSS59		232	164	324	556								16							2.8
SSS101	10	25.4	40	89	114.4					-	-	10-24un	6						1.8	
SSS102		55	87	121	176					40	6	1"-8	16						2.3	
SSS104		105	167	171	276					40	6	1"-8	16						3.3	
SSS106		155	246	247	402	57	45	38	19	40	6	1"-8	16	39	5/16"-18un	2 1/4"-14	30	12	4.4	
SSS108		206	327	298	504					40	6	1"-8	16						5.4	
SSS1010		257	408	350	607					40	6	1"-8	16						6.4	
SSS1012		305	484	400	705					40	6	1"-8	16						6.8	
SSS1014		356	566	451	807					40	6	1"-8	16						8.2	
SSS151	15	25.4	50	124	149				19										3.3	
SSS152		51	100	149.5	200.5				19										4.1	
SSS154		101.6	199	200	301.6				19										5.0	
SSS156		152.4	299	271.5	423.9	70	50	40	25.4	38	9.6	1"-8	25	47	3/8"-16un	2 3/4"-16	30	12	6.8	
SSS158		203	398	322	525				25.4										8.2	
SSS1510		254	498	373	627				25.4										9.5	
SSS1512		305	598	424	729				25.4										10.9	
SSS1514		356	698	475	831				25.4										11.8	
SSS251	25	25.5	84	139.5	165														5.9	
SSS252		50.8	168	165	215.8														6.4	
SSS254		102	338	215.5	317.5														8.2	
SSS256		152.4	505	273	425.4	85	65	55	25	50	10.5	1 1/2"-16	25	58	1/2"-12un	3 5/16"-12	50	19	10	
SSS258		210	696	324	534														12.2	
SSS2510		261	865	375	636														14.1	
SSS2512		311	1031	425	736														16.3	
SSS2514		362	1200	476	838														17.7	
SSS308	30	209	923	388.5	597.5	103	75	65	57	50	10.5	1 1/2"-16	25	-	-	4"-12	50	-	18.1	
SSS502	50	51	361	176	227				33										15	
SSS504		102	723	227	328				33										19.1	
SSS506		159	1126	288	447	127	95	80	33	70	2	-	-	95	1/2"-12un	5"-12	55	19	23.1	
SSS5013		337	2387	463	800				35										37.6	
SSS756		75	156	1619	288	444	146	115	95	30	70	5	-	-	-	-	5 3/4"-12	45	-	29.5
SSS7513		333	3457	492	825														59	
SSS1006	100	168	2228	357	525	177	130	105	41	70	2	-	-	139	3/4"-10un	6 7/8"-12	45	25	59	
SSS10010		260	3449	449	709														72.6	

CYLINDERS

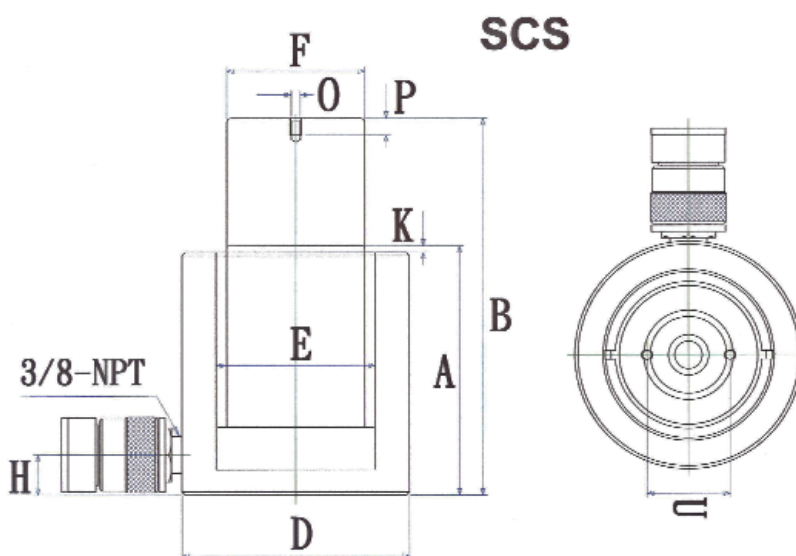
SCS SERIES: Shorty, Flat, Compact



Model: SCS-Series

Capacity : 10-100 Ton
 Stroke : 38-62 mm
 Max. working pressure : 10,000 psi / 700 Bar

All rams are single acting with spring return.
 Pistons hard chromed.
 Rams inside roll-polished.
 Rams outside blasted and chromed.

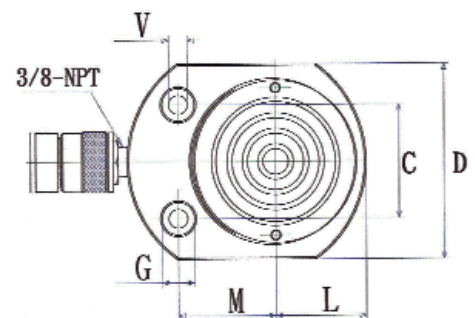
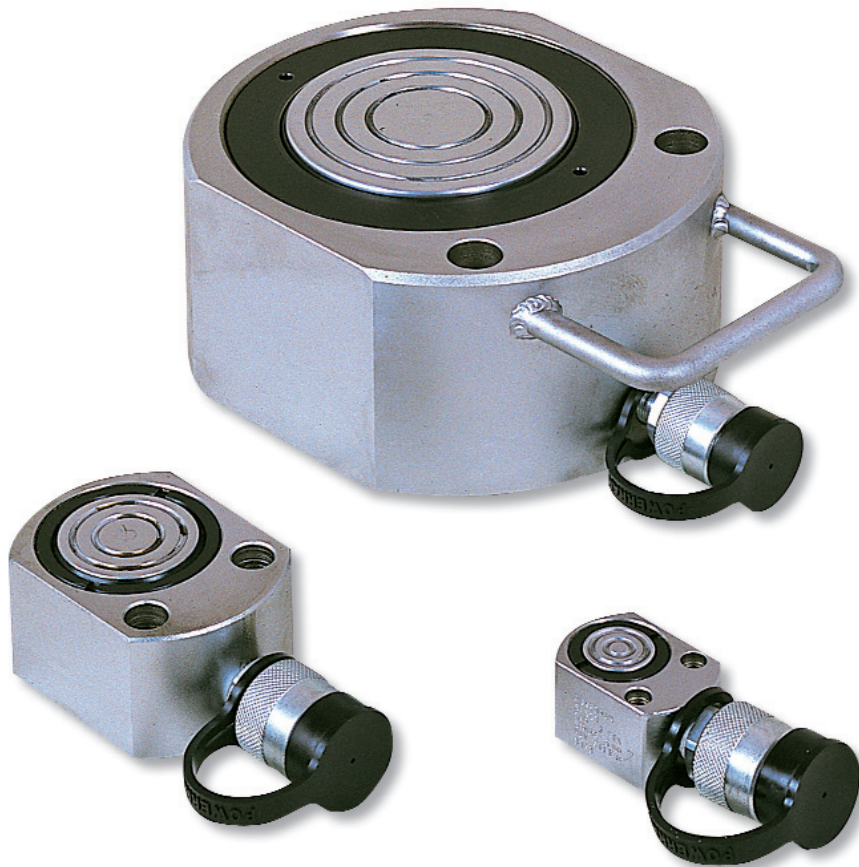


SCS SERIES: Shorty, Flat, Compact

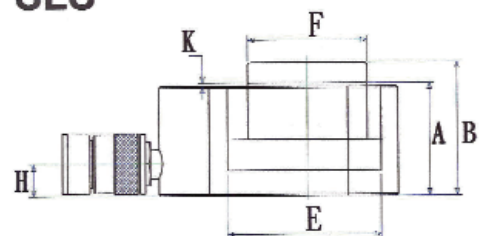
Type	Capacity ton	Stroke mm	Oil cap cm ³	A Height mm		C mm	D mm	E ø mm	F ø mm	G ø mm	H mm	K mm	L mm	M mm	O ø mm	P ø mm	U mm	V ø mm	Weight Kg
				Retracted	Extended														
SCS101	10	38	53.0	88	126	-	70	42	38	-	17	5	-	-	M4	8	26	-	4.1
SCS201	20	45	127.0	98	143	-	93	60	50	-	17	3	-	-	M5	8	39	-	5.0
SCS302	30	62	274.0	117	179	-	107	75	65	-	19	3	-	-	M5	8	39	-	6.8
SCS502	50	60	381.0	122	182	-	125	90	70	-	23	2	-	-	M5	8	39	-	10.9
SCS1002	100	57	756.0	141	198	-	165	130	95	-	31	1	-	-	M8	10	55	-	22.7

CYLINDERS

SLS SERIES: Shorty, Flat, Compact



SLS



Model: SLS-Series

Capacity : 5-150 Ton
 Stroke : 6-17 mm
 Max. working pressure : 10,000 psi / 700 Bar

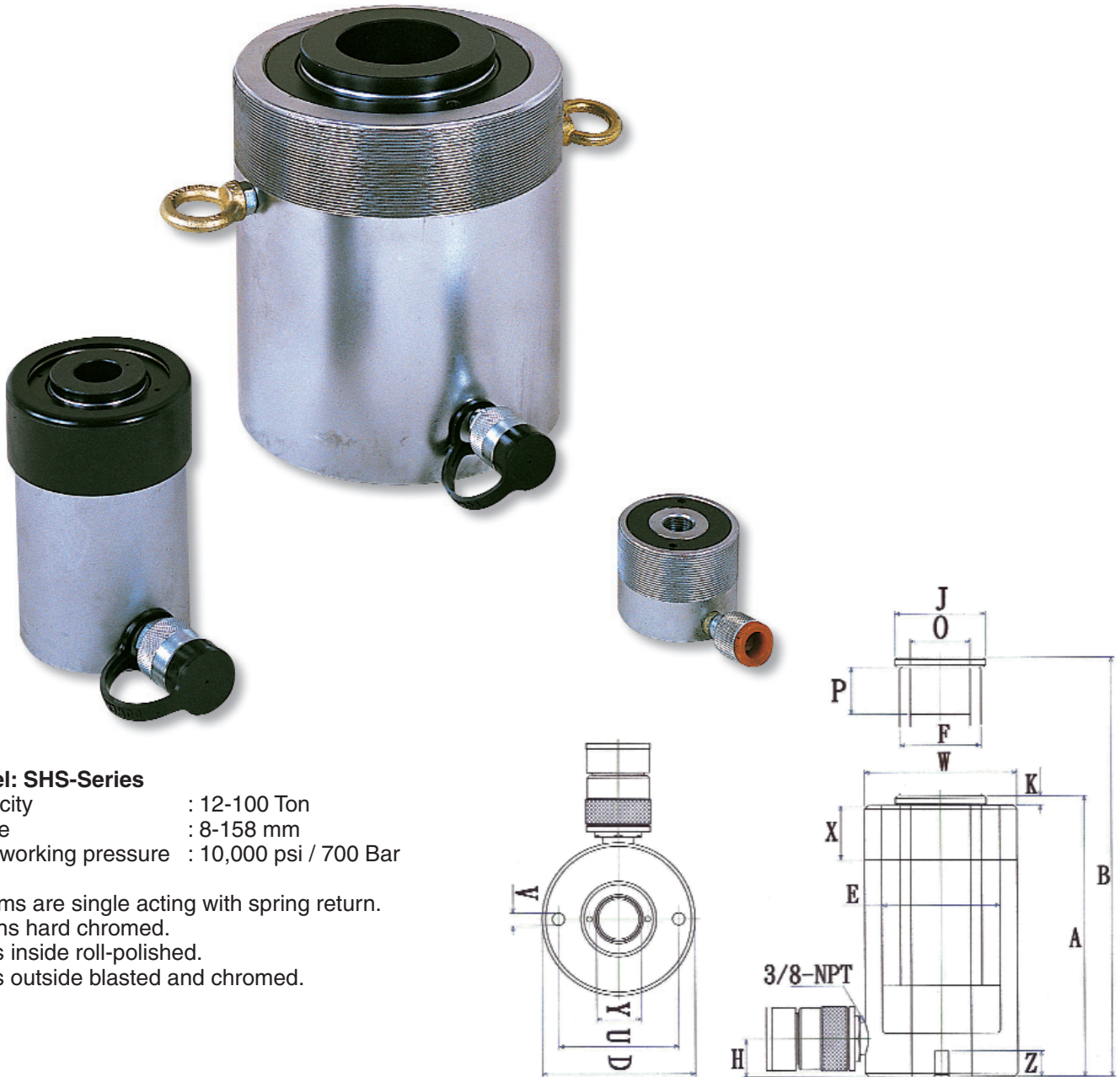
All rams are single acting with spring return.
 Pistons hard chromed.
 Rams inside roll-polished.
 Rams outside blasted and chromed.

SLS SERIES: Shorty, Flat, Compact

Type	Capacity ton	Stroke mm	Oil cap cm ³	A Height mm Retracted	B Height mm Extended	C mm	D mm	E ø mm	F ø mm	G ø mm	H mm	K mm	L mm	M mm	O ø mm	P ø mm	U mm	V ø mm	Weight Kg
SLS50	5	6	4.5	33	39	28.5	58x41	31	25.4	9.5	16	1	20	22	-	-	-	5.5	1.0
SLS100	10	12	18.0	42	54	36	82x55	44	38	11	19	1	28.5	34	-	-	-	7.5	1.4
SLS200	20	12	34.0	51	63	49.3	101x76	60	50.8	15	19	1	39	39	-	-	-	10	3.1
SLS300	30	13	54.0	58	71	52.3	117x95	73	63.5	16	19	2	47	44	-	-	-	10	4.5
SLS500	50	16	102.0	66	82	66.5	140x114	90	70	19	19	2	55	55	-	-	-	11	6.8
SLS750	75	16	166.0	79	95	76.2	165x140	115	82.5	20.5	19	2	69	66	-	-	-	13.5	11.3
SLS1000	100	16	212.0	85	101	76.2	178x152.5	130	92	20.5	19	2	76	74	-	-	-	13.5	14.5
SLS1500	150	17	342.0	100	117	117	216x190	160	115	20.5	23	2	95	82	-	-	-	13.5	26.3

CYLINDERS

SHS SERIES: Center hole cylinders



Model: SHS-Series

Capacity : 12-100 Ton
 Stroke : 8-158 mm
 Max. working pressure : 10,000 psi / 700 Bar

All rams are single acting with spring return.
 Pistons hard chromed.
 Rams inside roll-polished.
 Rams outside blasted and chromed.

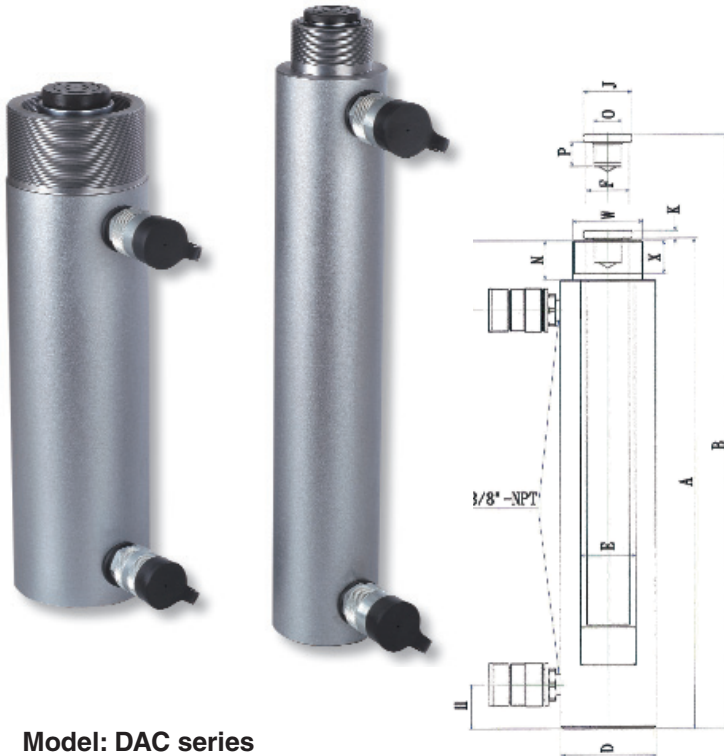
SHS SERIES: center hole cylinders

Centre Hole ϕ

Type	Capacity ton	Stroke mm	Oil cap cm ³	A Height mm Retracted	B Height mm Extended	D ϕ mm	E ϕ mm	F ϕ mm	H mm	J mm	K mm	O ϕ un	P mm	U mm	V ϕ unc	W ϕ un	X mm	Y ϕ mm	Z mm	Weight Kg
SHS120	12	8	18	60	68	73	54.1	35	11.5	-	-	3/4"-16	16	50.8	5/16"-18	2 3/4"-16	30	19.5	9	1.5
SHS121	12	42	96	121	163	73	54.1	35	19	-	-	-	16	-	-	2 3/4"-16	30	19.5	-	3
SHS123	12	76	175	180	256	73	54.1	35	19	-	-	-	16	50.8	5/16"-18	2 3/4"-16	30	19.5	12.7	4.2
SHS202	20	52	230	162	214	100	75	54.9	19	54	9	9/16"-16	19	82.6	3/8"-16	3 7/8"-12	38	27	9.4	7.5
SHS206	20	152	671	310	462	100	75	54.9	19	54	9	9/16"-16	19	82.6	3/8"-16	3 7/8"-12	38	27	9.4	13.5
SHS302	30	68.5	435	182	250.5	114	90	65	23	63	10	1 7/8"-16	22	92	3/8"-16	4 1/2"-12	42	36	14	11
SHS306	30	158	1005	332	490	114	90	65	25	63	10	1 7/8"-16	22	92	3/8"-16	4 1/2"-12	42	36	14	20.4
SHS603	60	76	932	247.5	323.5	158.6	125	90	32	89	12.5	2 3/4"-16	22	130	1/2"-12	6 1/4"-12	50	54	14	26.4
SHS606	60	153	1876	326.5	479.5	158.6	125	90	32	89	12.5	2 3/4"-16	22	130	1/2"-12	6 1/4"-12	50	54	14	34
SHS1003	100	83	1774	254	337	213	165	125	38	125	12	4"-12	28	178	5/8"-11	8 3/8"-12	60	79	19	50.1

CYLINDERS

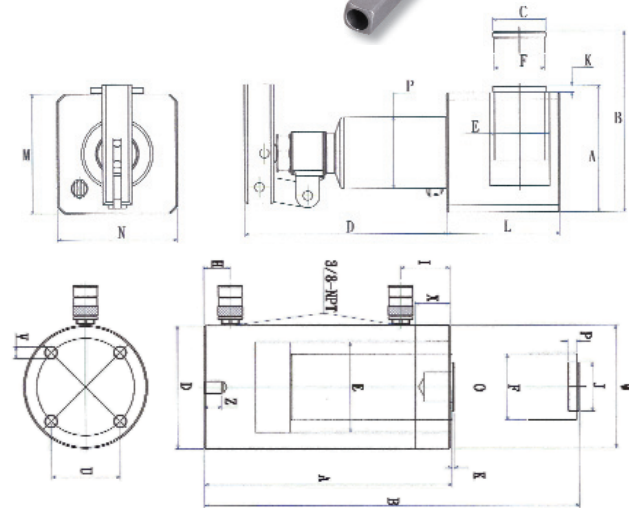
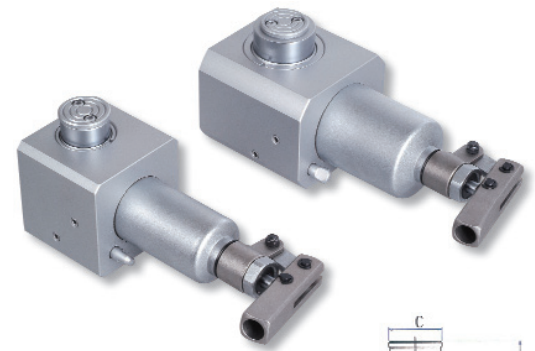
DAC SERIES: Double acting
CJ SERIES: Low-height jacks



Model: DAC series

Capacity : 10-100 tons.
 Stroke : 153 - 356 mm.
 Max. working pressure : 10,000 psi / 700 bar.

Perfect for construction, shipyards, utilities, mining and equipment maintenance.
 Hard chromed piston.
 Ram inside roll-polished.
 Ram outside blasted and chromed.



Model No.: DAC1006 & DAC10010

Model: CJ series

Spring-loaded
 Available in : 10 or 20 ton.
 Stroke : 41 mm.
 Max. working pressure : 10,000 psi / 700 bar.

Hard chromed piston.
 Ram inside roll-polished
 Perfect for jobs with limited space, like positioning machines, mounting tools or load tests.

DAC SERIES: Double acting cylinders

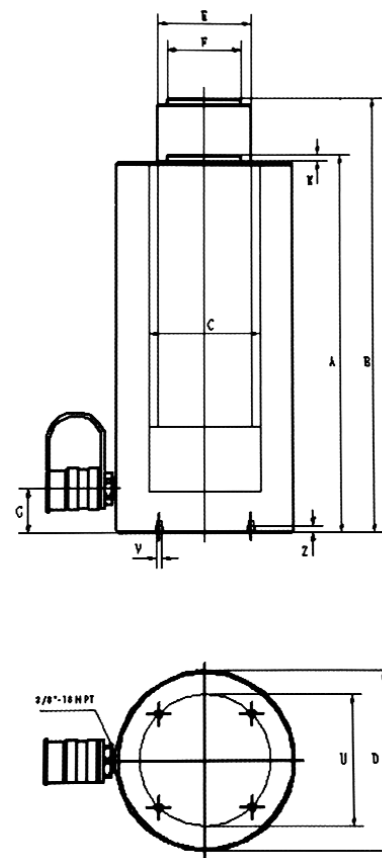
Type	Capacity ton		Stroke mm	Oil cap cm ³		A Height mm		D ø mm	E ø mm	F ø mm	H mm	I mm	J ø mm	K mm	O ø un	P mm	U mm	V mm	Z mm	W ø un	X mm	Weight Kg
	Push	Pull		Push	Pull	Retracted	Extended															
DAC1010	10	4.5	255	405	160	408	663	78	45	35	36	57	50	6	1"-8	20	-	-	-	2 ¹ / ₄ "-14	27	13
DAC1012	10	4.5	305	485	190	458	763	78	45	35	36	57	50	6	1"-8	20	-	-	-	2 ¹ / ₄ "-14	27	15
DAC2512	25	13	305	1500	720	470	775	101	56	50	36	26	50	10	1 ¹ / ₂ "-16	25	-	-	-	4"-12	40	29
DAC308	30	15	204	901	440	386.5	590.5	103	75	55	36	80	50	10	1 ¹ / ₂ "-16	30	-	-	-	4"-12	50	20
DAC3014	30	15	356	1572	760	551.5	907.5	103	75	55	36	80	50	10	1 ¹ / ₂ "-16	30	-	-	-	4"-12	50	29
DAC506	50	15	153	1084	320	336	489	127	95	80	30	76	70	3	1"-12	25.4	-	-	-	5"-12	50	29
DAC5013	50	15	356	2339	680	511	841	127	95	80	30	76	70	3	1"-12	25.4	-	-	-	5"-12	50	43
DAC756	75	25	153	1589	505	353	506	146	115	95	30	75	70	3	1"-12	38	-	-	-	5 ³ / ₄ "-12	50	40
DAC7513	75	25	356	3427	1090	524	854	146	115	95	30	75	70	3	1"-12	38	-	-	-	5 ³ / ₄ "-12	50	58
DAC1006	100	45	153	2030	945	359	512	177	130	95	38	71	70	10	1 ³ / ₄ "-12	35	139	3 ⁴ / ₄ "-10	25.4	6 ⁷ / ₈ "-12	50	59
DAC10013	100	45	356	4380	2040	526	856	177	130	95	38	71	70	10	1 ³ / ₄ "-12	35	139	3 ⁴ / ₄ "-10	25.4	6 ⁷ / ₈ "-12	50	83

CJ SERIES: Low-height jacks

Type	Capacity ton	Stroke mm	Oil cap cm ³	A Height mm		C ø mm	D mm	E ø mm	F ø mm	H mm	K mm	L mm	M mm	N mm	P ø mm						Weight Kg
				Retracted	Extended																
CJ100	10	41	155	95	136	40	152.5	45	37.95	407.5	4.9	85	90	90	53.8						5.5
CJ200	20	41	250	95	136	40	152.5	65	50.8	407.5	4.9	110	90	110	69.5						8

ALUMINIUM CYLINDERS

SSA SERIES



Model: SSA series

- 14 standard models available for 50 to 150 tons.
- Up to 60% lighter than steel cylinders.
- Heavy-duty spring for easy and full retraction.
- Large saddle surface for angle load protection.
- High-flow quality couplers.
- All models are provided with carrying handles.
- Rod wiper protects inner rod from dirt.
- Hard-anodized housing and piston reduce wear and corrosion.

Custom stroke lengths and capacities are available.

SSA SERIES: Aluminium cylinders

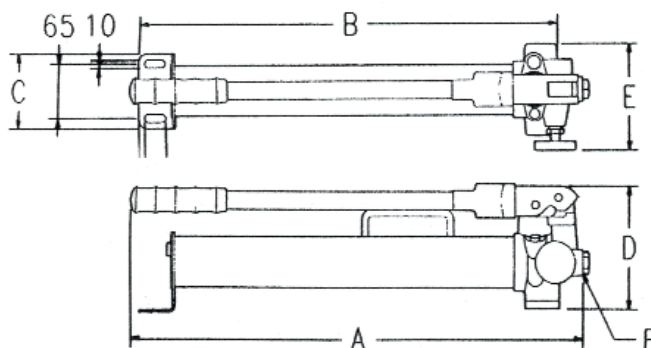
Type	Capacity ton	Stroke mm	Oil cap cc	A Min. mm	B Ext. mm	Effect Area sq.in	C Body i.d. mm	D Body o.d. mm	E Piston o.d. mm	F mm	G Base to port mm	K mm	U mm	V mm	Z mm	Weight Kg
SSA502	50	50	354	165	215	11	95	140	80	60	38.1	3	110	M6x1.0	6	6
SSA504	50	100	708	215	315	11	95	140	80	60	38.1	3	110	M6x1.0	6	7.7
SSA506	50	150	1062	265	415	11	95	140	80	60	38.1	3	110	M6x1.0	6	8.2
SSA508	50	200	1416	315	515	11	95	140	80	60	38.1	3	110	M6x1.0	6	12.7
SSA5010	50	250	1770	365	615	11	95	140	80	60	38.1	3	110	M6x1.0	6	16.4
SSA754	75	100	138	215	315	15	115	165	100	70	38.1	3	135	M6x1.0	6	13.2
SSA756	75	150	1557	265	415	15	115	165	100	70	38.1	3	135	M6x1.0	6	15.9
SSA1002	100	50	663	165	215	20.7	130	203	110	90	38.1	3	160	M6x1.0	6	18.2
SSA1004	100	100	1326	215	315	20.7	130	203	110	90	38.1	3	160	M6x1.0	6	20.5
SSA1006	100	150	1989	265	415	20.7	130	203	110	90	38.1	3	160	M6x1.0	6	22.7
SSA10010	100	250	3315	365	615	20.7	130	203	110	90	38.1	3	160	M6x1.0	6	30.9
SSA1502	150	50	1068	165	215	30.7	165	254	140	110	38.1	3	200	M6x1.0	6	26.4
SSA1506	150	150	3205	265	415	30.7	165	254	140	110	38.1	3	200	M6x1.0	6	39
SSA15010	150	250	5342	365	615	30.7	165	254	140	110	38.1	3	200	M6x1.0	6	50

HEAVY-DUTY HANDPUMPS



Model: PB series

- Betex heavy duty handpumps feature a forged construction.
- The drop-forged base and rugged welded construction effectively prevents collision damage and deformation.
- The professional choice for a wide range of industrial applications.
- Internal overload valve prevents pump from being used beyond its rated capacity.
- Two-speed pumps provide rapid pumping to load the cylinder quickly.
- External adjustable relief valve with locking mechanism.
- Carrying handles for easy portability.



Two-speed heavy-duty handpumps

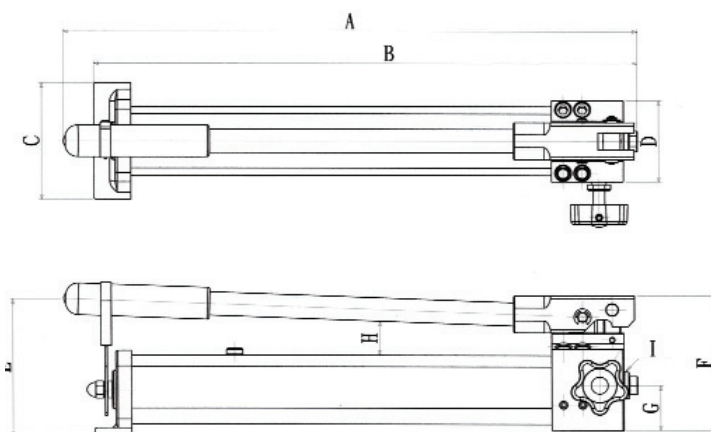
Type	Pressure rating bar		Usable oil capacity cc	Oil volume per stroke cc		A mm	B mm	C mm	D mm	E mm	Oil port thread F	Weight Kg
	1st stage	2nd stage		1st stage	2nd stage							
PB350	13,8	700	350	13,0	2,8	335	303	90	146	128	3/8 NPT	5,5
PB700	13,8	700	700	13,0	2,8	632	541	90	146	128	3/8 NPT	7,3

ALUMINIUM HANDPUMPS



Model: AHP series

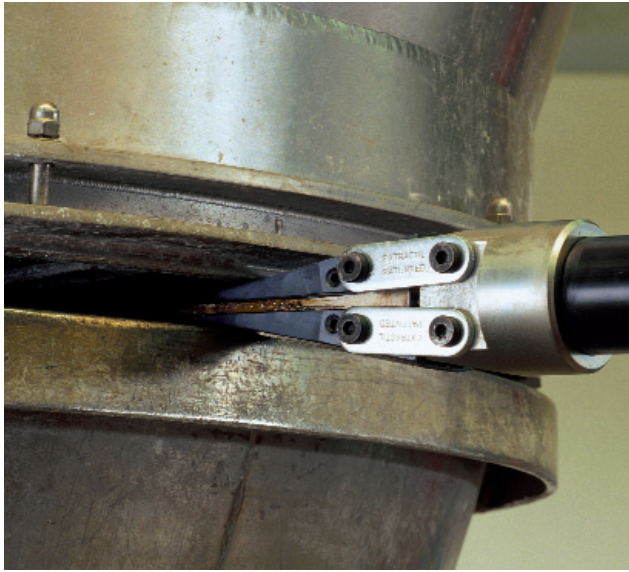
- Our handpumps are always characterized by their rugged construction and easy-operation handles.
- Aluminium alloy construction and handy release knobs with locking mechanism are perfect for industrial applications and daily operations.
- Special lightweight design with aluminium alloy construction makes for an easily portable and mobile unit.
- Double-acting design on AHP703D is ideal for double-acting cylinders without the need for extra controlling valve and adapters.
- 2800 bar model provides special, lightweight ultra high-pressure application.



Aluminium handpumps

Type	Pressure rating (bar)		Usable oil capacity (cc)	Oil volume per stroke (cc)		A mm	B mm	C mm	D mm	E mm	F mm	G mm	H mm	I	Weight Kg
	1st stage	2nd stage		1st stage	2nd stage										
AHP701	13.8	700	350	12.9	1	391	361	110	77	140	127	42.5	37	3/8" -NPT	2.3
AHP702	13.8	700	1000	12.9	2.3	542	513	110	77	130	127	42.5	-	3/8" -NPT	3.5
AHP703	13.8	700	2000	12.9	2.3	623	556	150	102	135	135	50	-	3/8" -NPT	6
AHP703D	13.8	700	2000	12.9	2.3	623	556	150	102	135	135	24/37	-	3/8" -NPT	7.0
AHP704	13.8	1000	1000	12.9	1.65	539	501	110	77	145	127	42.5	-	3/4" -16UNF	3.5
AHP705	13.8	1500	2700	6.5	1	699	629	150	102	152	157	50	-	3/8" -NPT	6.7
AHP2800	14	2800	1000	12.9	0.65	620	488	80	140	108	157	26	-	3/4" -16UNF	5.3

HYDRAULIC SPREADERS/LIFTERS



15 TLS



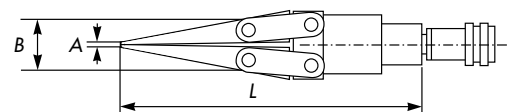
25 TLS

Loads are lifted perpendicularly!

- Ideal for numerous industrial maintenance repair jobs.
- Accurate height adjustments (for instance shaft alignment) can easily be executed by one person.
- Easy, light and very practical to use. Particularly suitable when available space is very limited.
- Suitable for spaces of 5 to 43 mm.
- Due to the reduced thickness of the jaws, made of high quality hardened steel, these multi-functional wedges can be used for jobs where working space is extremely limited.

Various combination sets* available in carrying case, including:

- hydraulic spreader/lifter
- 2-stage handpump
- hose, 1.8 mtr
- pressure gauge
- T-adaptor
- male (hose) half coupler
- complete quick coupler



Type	Art. no.	Capacity ton	Max. spread mm	Max. pressure bar	Combined pump	A mm	B mm	L mm	Weight Kg
15 TLS	789150	15	10	700	single-acting	5	40	235	4
25 TLS	789250	25	16	700	single-acting	8	43	342	8

* see price list

PORTABLE POWER KITS



Set PPK 4 (art.nr. 7560804)
incl. 4 t cylinder, 100 mm stroke, in portable transport case

Set PPK 10 (art.nr. 7560810)
incl. 10 t cylinder, 150 mm stroke, in portable transport case on wheels.



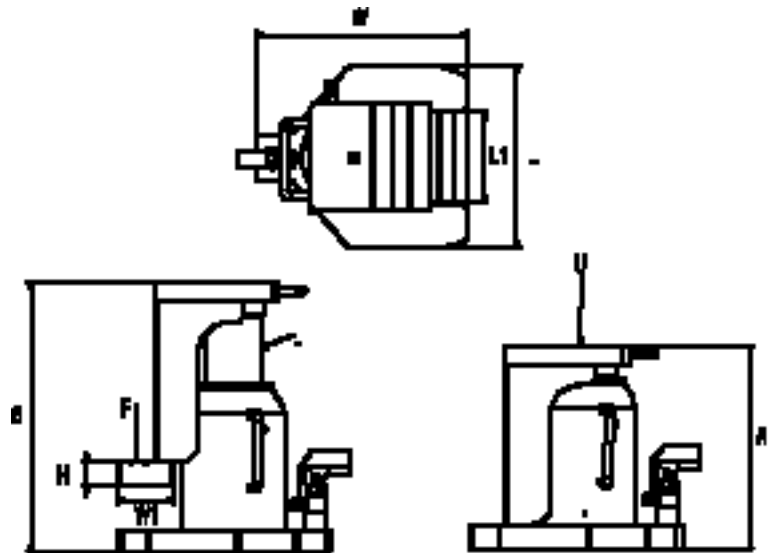
- 'Snap-on' design for quick and easy assembly and disassembly.
- Extra thick extension rods designed for strength prevent bending.
- Single acting pump, 700 bar with safety valve to prevent overloading.
- Flexible hydraulic hose, 1.8 mtr.
- Versatile through many different accessories!
- All parts are made of forged steel.

Type PPK 4	Description 4 t	Type PPK 10	Description 10 t
PA351	"heavy duty" hydraulic hand pump	PA603	"heavy duty" hydraulic hand pump
HS236	HD hose 1,8 meter	HS236	HD hose 1,8 meter
PA404	4-tons cylinder with 101,6 mm stroke	PA106A	10-tons cylinder with 152,4 mm stroke
SR05A	spreader 0,5 ton	SR05A	spreader 0,5 ton
B0523	extension rod 406,4 mm	B0519	extension rod 482,6 mm
B0524	extension rod 304,8 mm	B0520	extension rod 355,6 mm
B0525	extension rod 203,2 mm	B0521	extension rod 254 mm
B0526	extension rod 101,6 mm	B0522	extension rod 127 mm
B0467	male connector	B0406	male connector
F0180	flat base	F0174	flat base
F0181	90 degree V base	F0175	90 degree V base
F0182	spreader	F0176	spreader
F0183	plunjer toe	F0177	plunjer toe
F0184	ram toe	F0178	ram toe
B0540	rubber flexible head	B0541	rubber flexible head
F0179	serrated saddle	F0173	serrated saddle
G0026	transport case	G0021	transport case on wheels

TOE JACKS



- Heat-treated and chrome-plated hydraulic rod provides longer seal life and optimum performance.
- Internal safety valve prevents toe jack being used beyond its rated capacity.
- Leakages are prevented by welding the housing onto the forged base.
- Strong toe lift for long service life.
- Low toe heights for tight spaces.
- Swivel sockets for easy operation.
- Toe jacks can be operated quickly by hand without a load.
- Removable handle makes unit easier to operate.

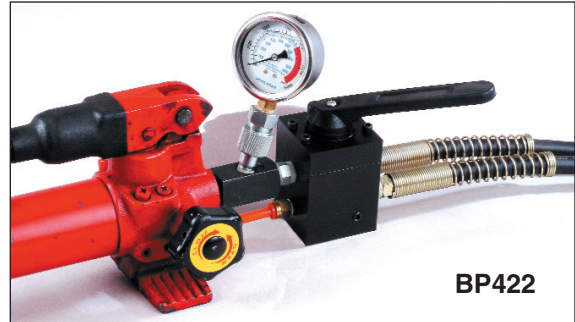


Toe jacks

Type	Top cap. U (tons)	Top-lift cap. F (tons)	Stroke mm	Min. height A mm	Max. height A mm	Piston rod diam. J mm	Base dimensions LxW mm	Height H mm	Top-lift L1xW1 mm	Weight kg
TOE-025	2.5	1.2	100	176	276	19	140x190	19	65x50	6.5
TOE-040	4	2	110	136	246	25	150x200	19	65x50	8
TOE-060	6	3	100	134	234	36	160x217	19	65x50	10
TOE-100	10	5	130	164	294	40	189x242	22	75x55	11.9
TOE-160	16	8	134	168	302	52	211x256	25	90x55	23
TOE-200	20	10	140	182	322	56	228x274	25	100x60	31
TOE-300	30	15	100	147	247	70	259x305	32	110x60	47.3
TOE-500	50	25	110	165	275	90	299x347	38	150x60	77.5

ACCESSORIES

Hoses, regulators, valves, gauge adapters



M0031B



E0567



VB201



VB401



VC331

- Heavy-duty hoses rated at 10,000 psi meet IJ-100 specifications
- Hoses are black rubber coated with two layers of steel braided reinforcement, I/D of 1/4".
- Flexible hoses with spring guards at both ends to protect the adapters. Available to special lengths upon request.
- BETEX supplies a variety of screw-set quick couplers in four different sizes. These can also be used with existing hydraulic systems.
- All couplers are rated to 10,000 psi and have an anti-leak mechanism that works in either low- and/or high-pressure conditions.

MODEL: M0031B

Hydraulic gauge
Liquid-filled, dampens needle vibration.
Indicated range: 1000 Bar (14,000 psi); Safety Range: 700 Bar(10,000psi).
Diameter of Gauge surface: 63 mm; Thread size: 1/4 NPT.

MODEL: E0567

Gauge adapter
Allows you to fit gauge between hydraulic pump and hose coupling.

MODEL: VB201/VB401

Manifold valve
Allows distribution of hydraulic fluid from one source to two or four cylinders.

MODEL: VC331

One-way relief valve
Allows metered lowering of cylinder and locks when prolonged load lifting is required. Also protects rams and hoses which need to be separated.

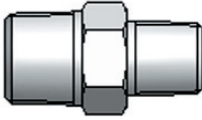
MODEL: BP422

Manifold valve
Allows distribution of hydraulic fluid for double-acting cylinder.
Aluminium alloy construction for long service life, easy operation and portability

Type	End one	End two	Length (mm)
HS225	1/4" NPT	1/4" NPT	1800
HS235	1/4" NPT	3/8" NPT	1800
HS226	1/4" NPT	1/4" NPT	2100
HS236	1/4" NPT	3/8" NPT	2100
HS333	3/8" NPT	3/8" NPT	900
HS335	3/8" NPT	3/8" NPT	1800
HS336	3/8" NPT	3/8" NPT	2100

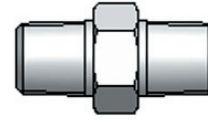
ACCESSORIES

Connectors, nipples, adapters



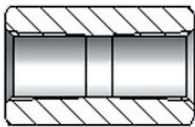
MODEL: ADO203 (REDUCING CONNECTOR)

Part no. ADO203:
1/4 NPT on one male end & 3/8 NPT on the other male end.



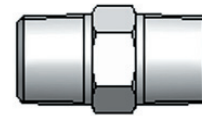
MODEL: ADO202 (HEXAGON NIPPLE)

Part no. ADO202:
1/4 NPT on both male ends.



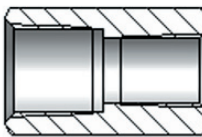
MODEL: ADI202 (CONNECTOR)

Part no. ADI202
1/4 NPT on both female ends.



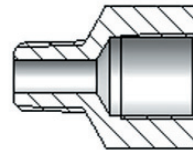
MODEL: ADO303 (HEXAGON NIPPLE)

Part no. ADO303:
3/8 NPT on both male ends.



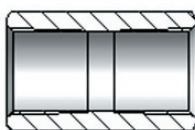
MODEL: ADI203 (CONNECTOR)

Part no. ADI203:
1/4 NPT on one female end & 3/8 NPT on the other female end



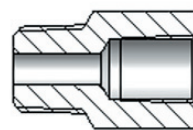
MODEL: ADF203 (ADAPTER)

Part no. ADF203:
1/4 NPT on the male end & 3/8 NPT on the female end.



MODEL: ADI303 (CONNECTOR)

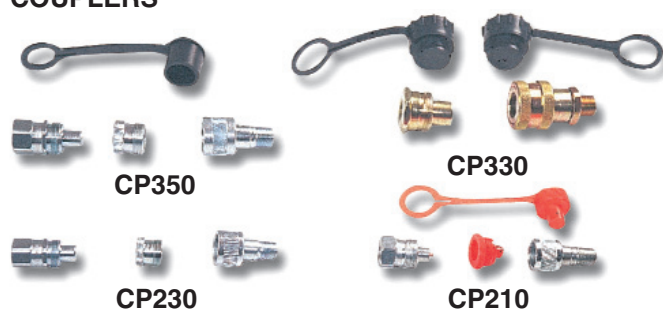
Part no. ADI303:
3/8 NPT on both female ends.



MODEL: ADF302 (ADAPTER)

Part no. ADF302:
3/8 NPT on the male end & 1/4 NPT on the female end.

COUPLERS



Type		Type	Thread size
CP210	Ram half	CP211	1/4" NPT
	Hose half	CP212	1/4" NPT
CP230	Ram half	CP231	1/4" NPT
	Hose half	CP232	1/4" NPT
CP330	Ram half	CP331	3/8" NPT
	Hose half	CP332	3/8" NPT
CP350	Ram half	CP351	3/8" NPT
	Hose half	CP352	3/8" NPT

